

Adele

SONG

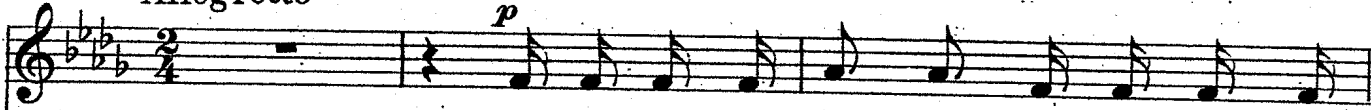
Lyric by
EDWARD PAULTON

Adele

Music by
JEAN BRIQUET
and ADOLF PHILIPP

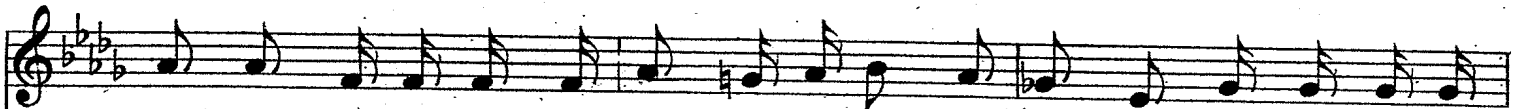
Allegretto

VOICE



You would know my name, sir, Praps you're not to
Names, be-yond a ques-tion, Ought to give sug-

PIANO



blame, sir, Its a nat'-ral thing and a most po-lite one. Have a try to
ges-tion Of the kind of girls who may chance to wear them, Hence Bab-ette's a



guess it, On you 'twill im-press it If by an-y chance you should find the
pert girl, Fi - fi naughty flirt girl; Ver - on-ique hates men and her glanc-es



right one. Gen-e-vieve! Ce-lest! Non! Neith-er I sug-gest, Non! Vi-o-lette! Jus-
 scare them. Paul-ine should be soul-ful: Mad-e-line be dole-ful, So Di-ane should

tine! Come, play the game! Ju-lie, praps? Ma-rie? Jo-seph-ine? I
 tall and grace-ful be; — That sir is my case, Look me in the

see — Im ob-liged to tell you what's my name.
 face — Tell me if my name's the one for me.

Valse Lento

A - dele! A - dele! A - dele! So shy,

you can tell; A - dele! A - dele! A -

dele! She in Par - ee can't dwell.

— A - dele! A - dele! A - dele! Is

no reign - ing belle, No red rose co -

quette But a coy vi - o - let is A - dele! *Pauvre A-*

This system contains the first line of the vocal melody and the first two staves of the piano accompaniment. The vocal line begins with a treble clef and a key signature of three flats. The lyrics are "quette But a coy vi - o - let is A - dele!". The piano accompaniment consists of a right-hand staff with chords and a left-hand staff with a rhythmic bass line. A first ending bracket is placed over the final two measures of the system.

dele! A - dele! *Pauvre A - dele!*

This system contains the second line of the vocal melody and the second two staves of the piano accompaniment. The vocal line continues with the lyrics "dele! A - dele! Pauvre A - dele!". The piano accompaniment continues with similar harmonic support. A second ending bracket is placed over the final two measures of the system.

p

This system contains the third line of the piano accompaniment. The right-hand staff is mostly empty, while the left-hand staff features a rhythmic pattern of eighth notes. A piano dynamic marking (*p*) is present.

p *decrescendo* *pp* *ff*

This system contains the fourth line of the piano accompaniment. The right-hand staff features a series of chords with a dynamic marking of *p*. The left-hand staff features a series of chords with a dynamic marking of *pp*. The system concludes with a *ff* dynamic marking and a fermata.