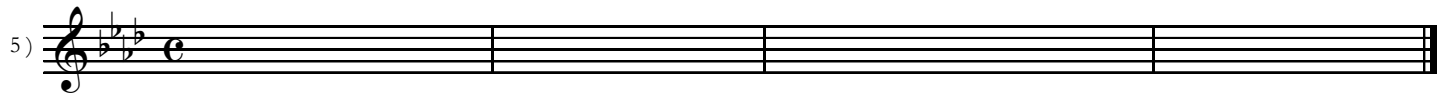
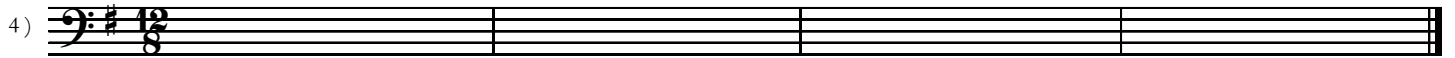
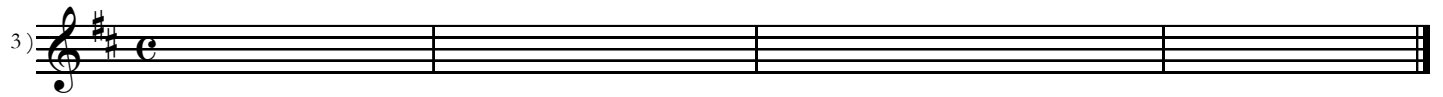
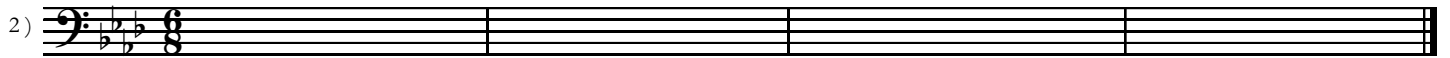
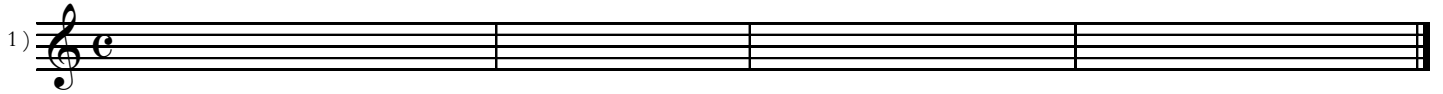
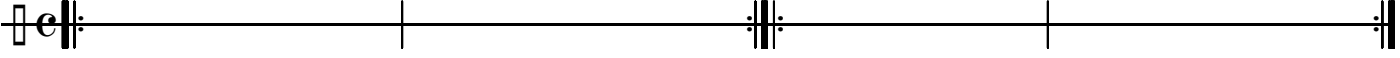
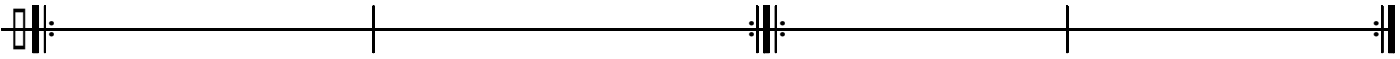


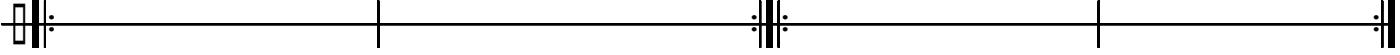
# Chapter 1 Melodic Dictation Examples

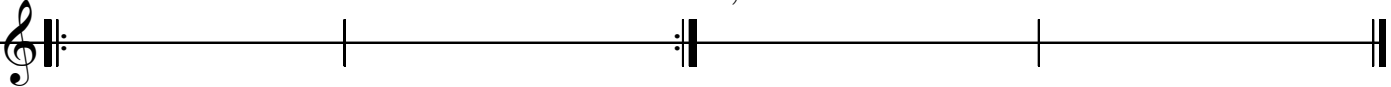


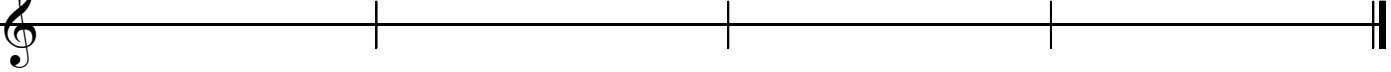
# Chapter 1 Rhythm Dictation Examples

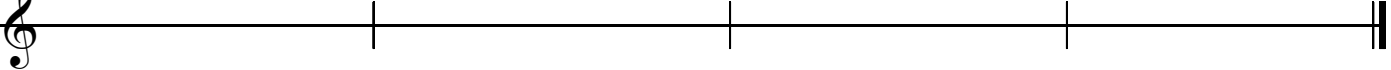
1) 

3) 

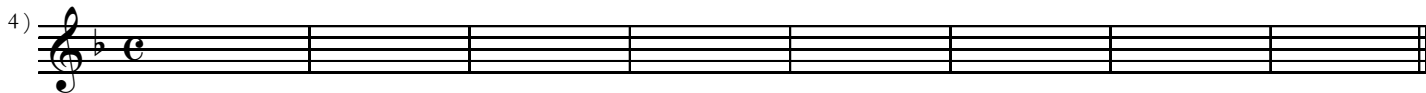
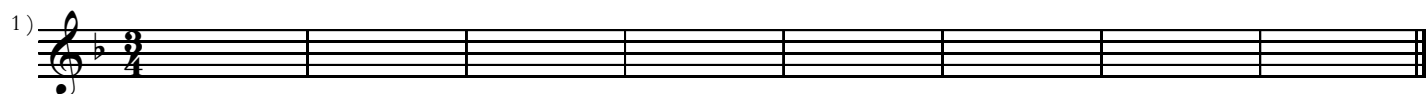
5) 

7) 

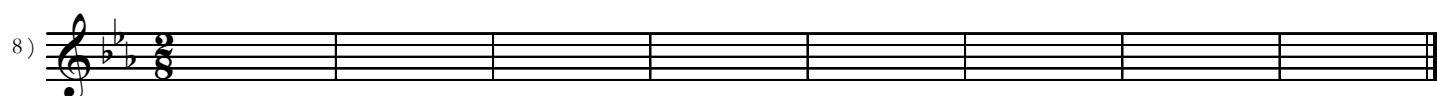
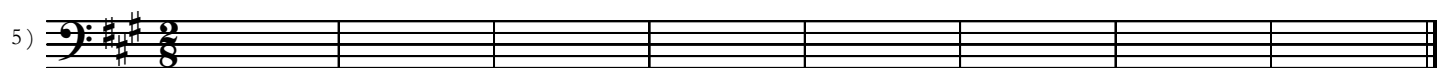
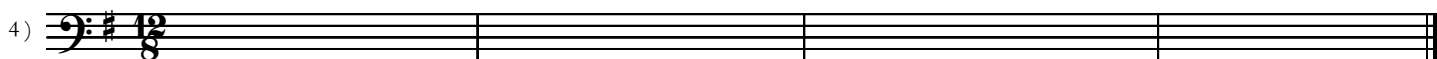
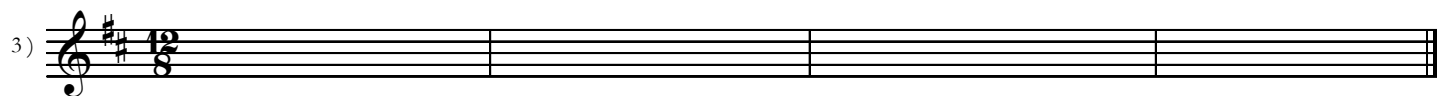
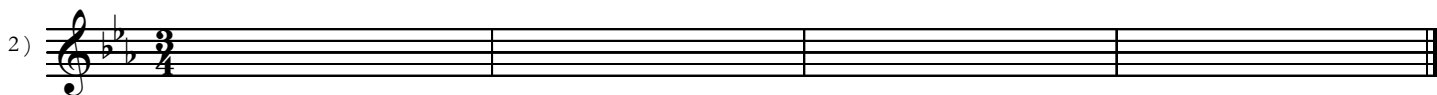
9) 

10) 

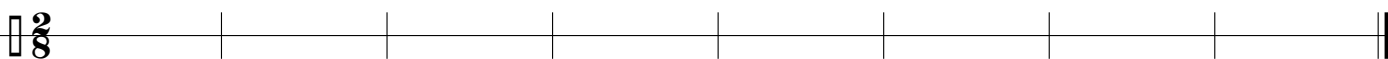
## Chapter 1 Harmonic Dictation Examples




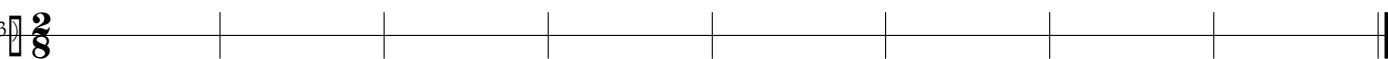
## Chapter 2 Melodic Dictation Examples




# Chapter 2 Rhythm Dictation Examples

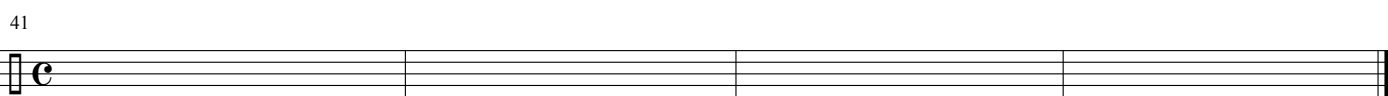
1)  1)  $\frac{2}{8}$  ———— | ———— | ———— | ———— | ———— | ———— | ———— | ———— ||

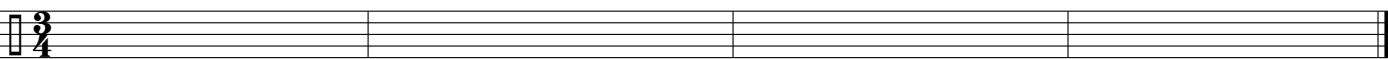
2)  2)  $\frac{2}{8}$  ———— | ———— | ———— | ———— | ———— | ———— | ———— | ———— ||

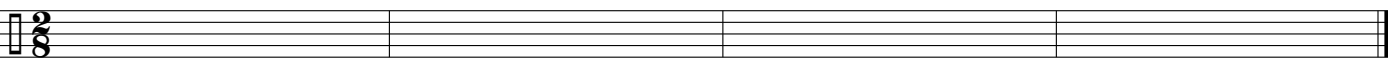
3)  3)  $\frac{2}{8}$  ———— | ———— | ———— | ———— | ———— | ———— | ———— | ———— ||

4)  4)  $\frac{2}{8}$  ———— | ———— | ———— | ———— | ———— | ———— | ———— | ———— ||

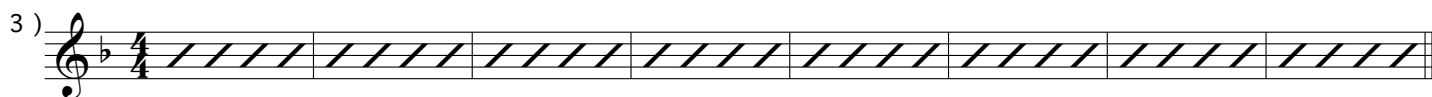
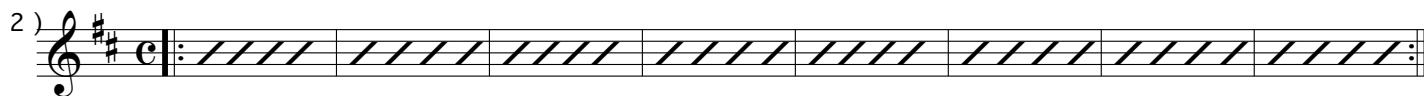
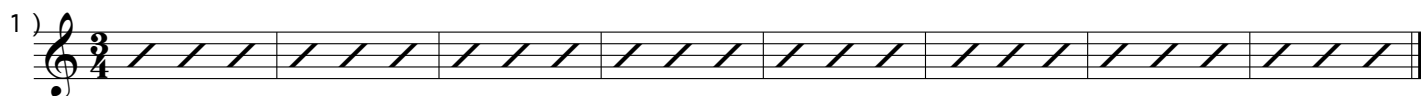
5)  5)  $\frac{3}{4}$  ———— | ———— | ———— | ———— | ———— | ———— | ———— ||

41  
6)  6)  $\text{C}$  ———— | ———— | ———— | ———— ||

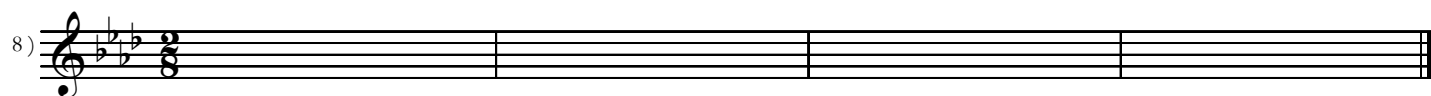
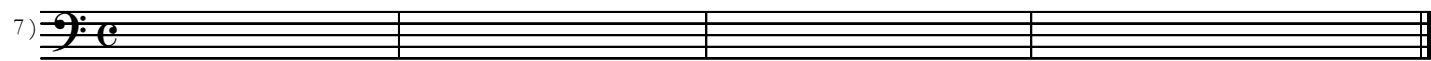
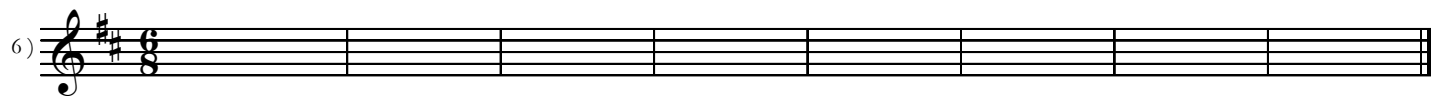
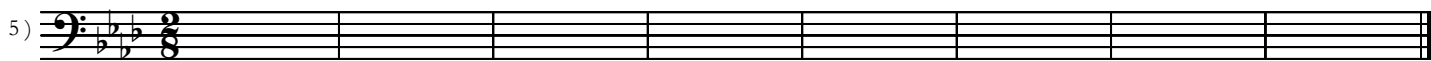
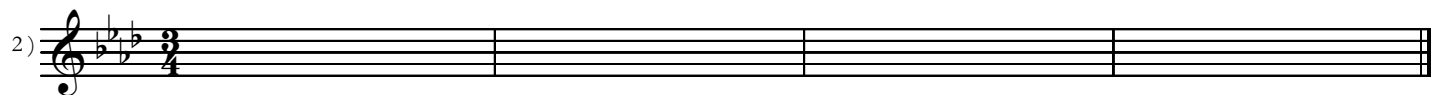
7)  7)  $\frac{3}{4}$  ———— | ———— | ———— | ———— ||

8)  8)  $\frac{2}{8}$  ———— | ———— | ———— | ———— ||

## Chapter 2 Harmonic Dictation Examples



# Chapter 3 Melodic Dictation Examples



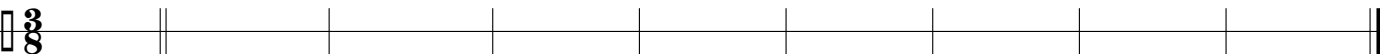
# Chapter 3 Rhythm Dictation Examples

1) 

2) 

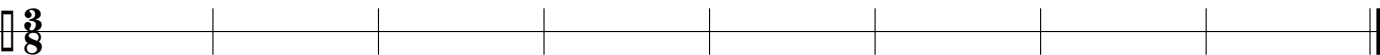
3) 

4) 

5) 

6) 

7) 

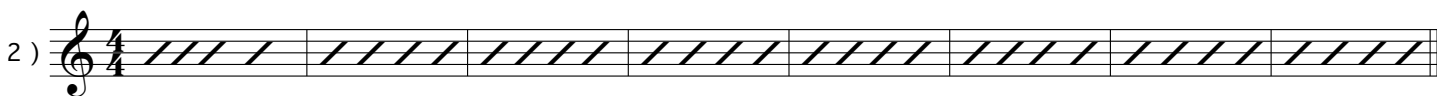
8) 

9) 

10) 



# Chapter 3 Harmonic Dictation Examples

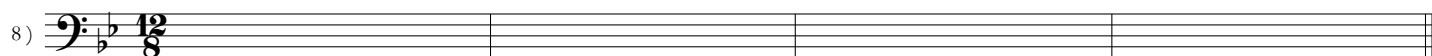
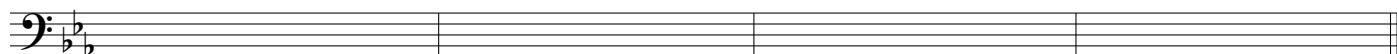
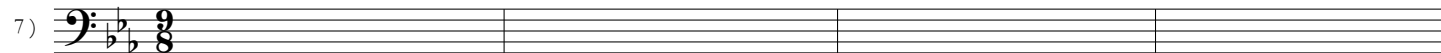
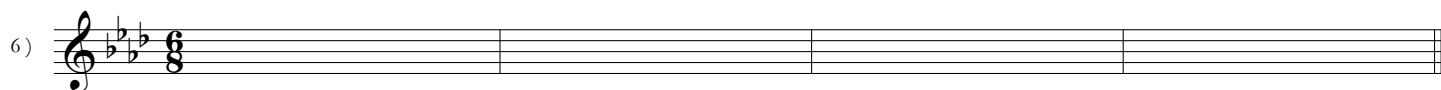
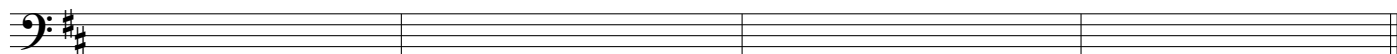
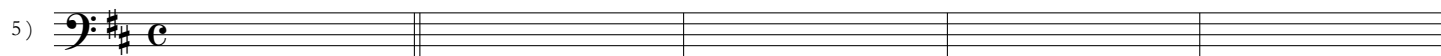
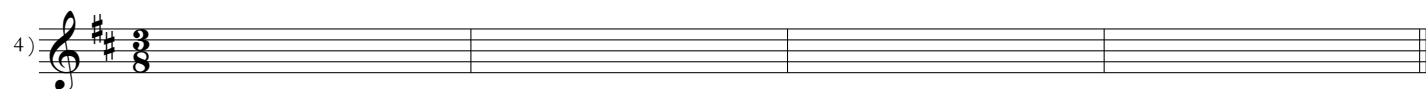
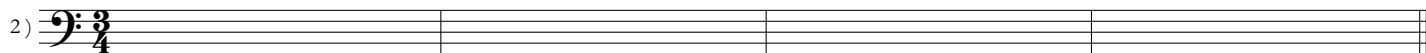
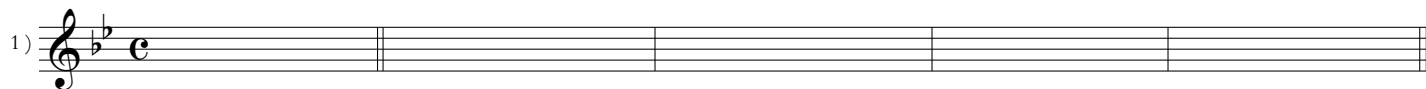


# Chapter 4 Melodic Dictation Examples

All examples are in Dorian mode


Examples 1-4 use parallel key signature

Examples 5-8 use relative key signature



# Chapter 4 Rhythm Dictation Examples

M.M.=154

1) 

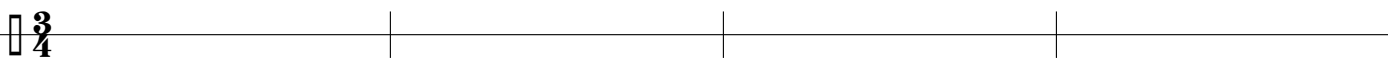
M.M.=72

2) 

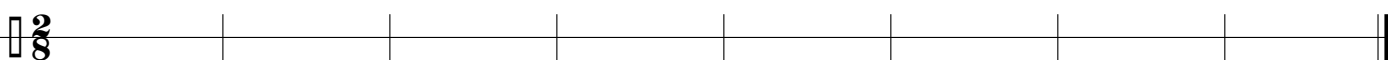
3) 

Fast

4) 

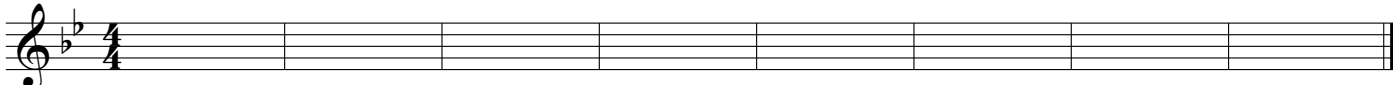
5) 



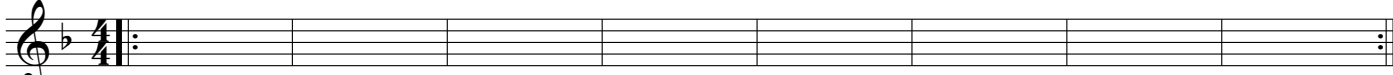
6) 

# Chapter 4 Harmonic Dictation Examples

## Dorian

1) 

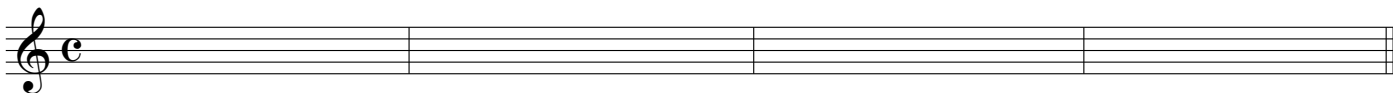
2) 

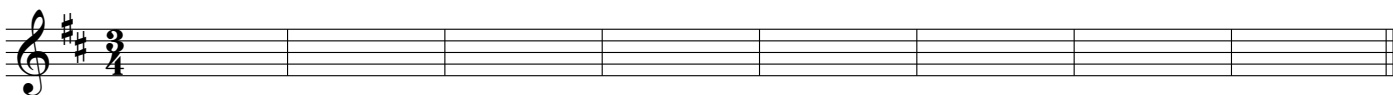
3) 

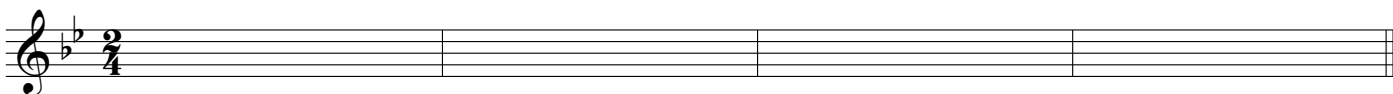
4) 

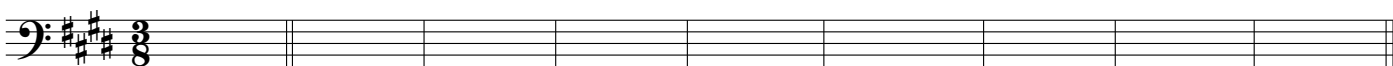
# Chapter 5 Melodic Dictation Examples

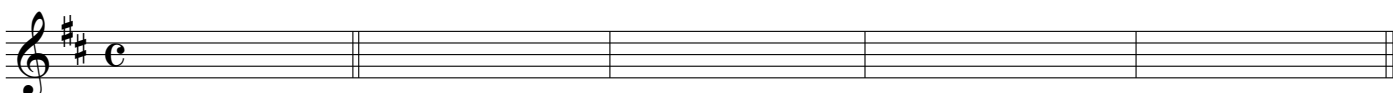
All examples are in Phrygian mode  
Examples 1-4 use parallel key signature  
Examples 5-8 use relative key signature

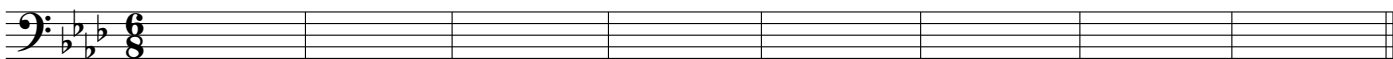
1) 

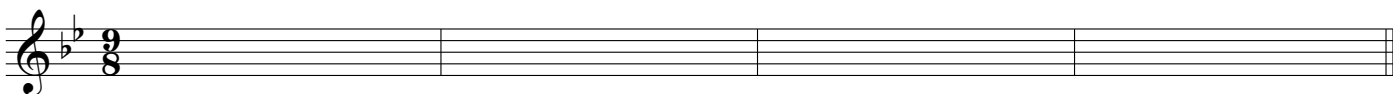
2) 

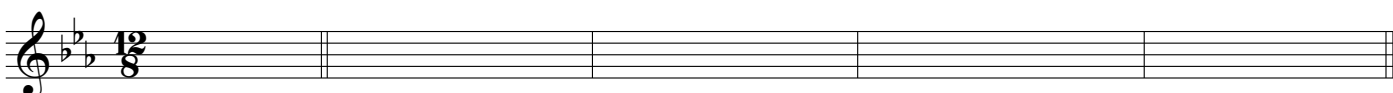
3) 

4) 

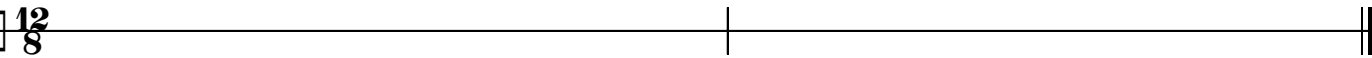
5) 

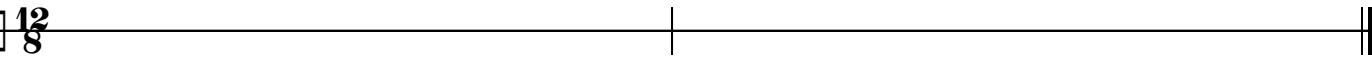
6) 

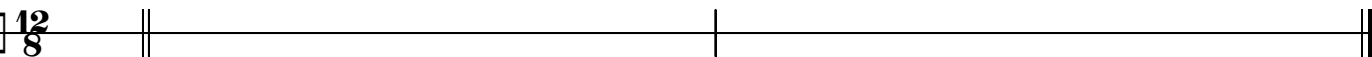
7) 

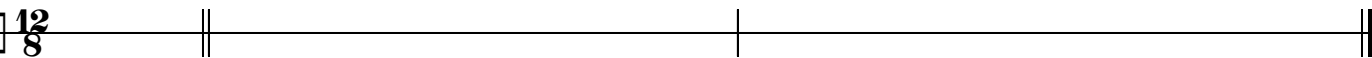
8) 

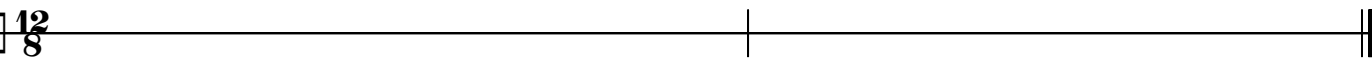
# Chapter 5 Rhythm Dictation Examples

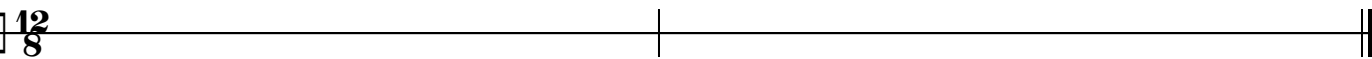
1)  $\frac{12}{8}$  

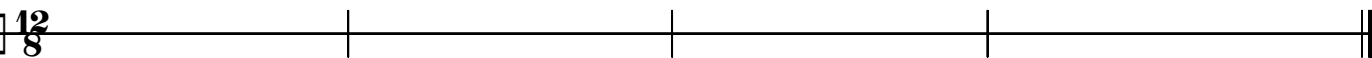
2)  $\frac{12}{8}$  

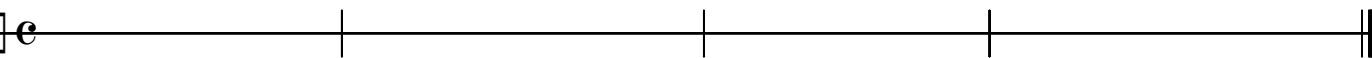
3)  $\frac{12}{8}$  

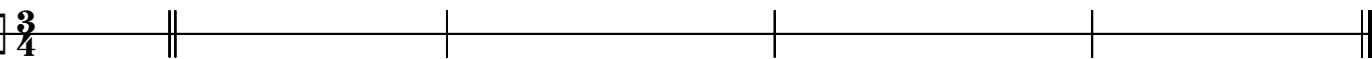
4)  $\frac{12}{8}$  

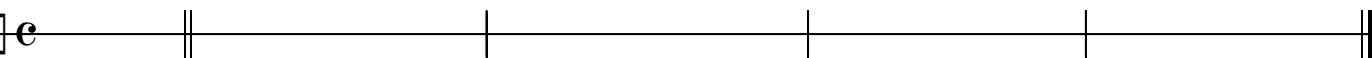
5)  $\frac{12}{8}$  

6)  $\frac{12}{8}$  

7)  $\frac{12}{8}$  

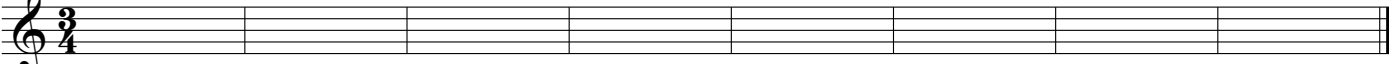
8)  $\mathbf{c}$  

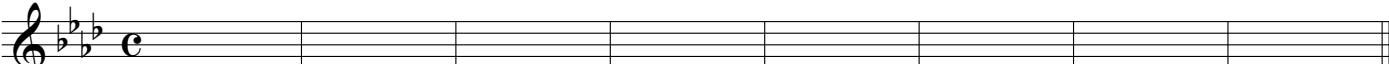
9)  $\frac{3}{4}$  

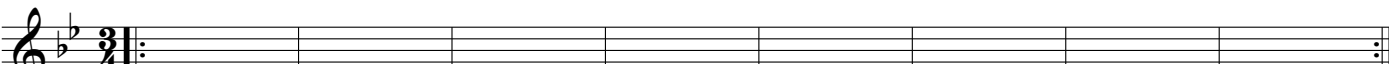
10)  $\mathbf{c}$  

# Chapter 5 Harmonic Dictation Examples

## Phrygian

1) 

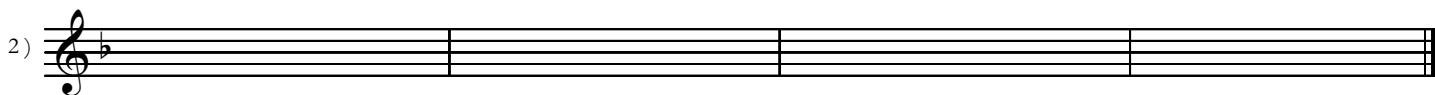
2) 

3) 

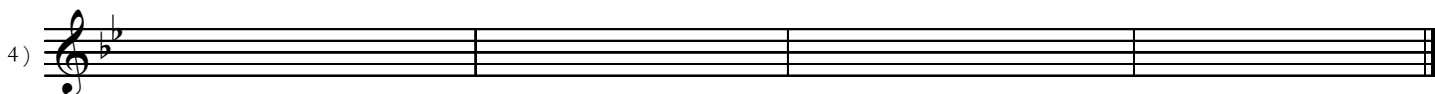
4) 

# Chapter 6 Melodic Dictation Examples

1) 


2) 

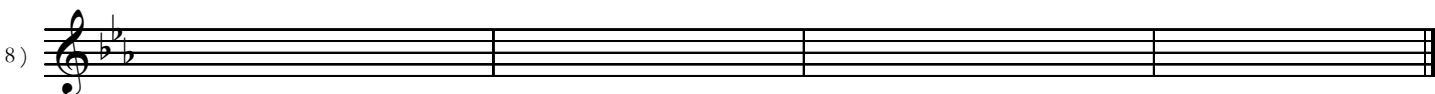
3) 

4) 

5) 

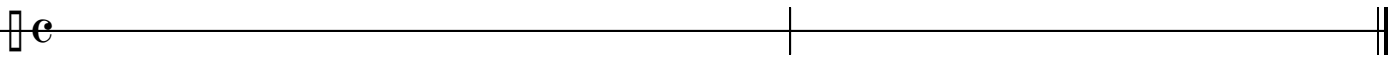
6) 

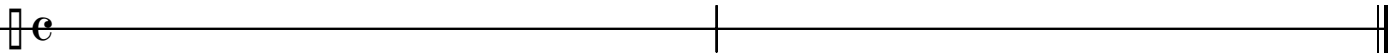
7) 

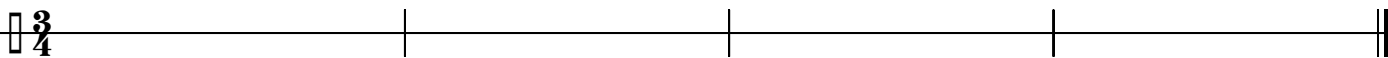
8) 

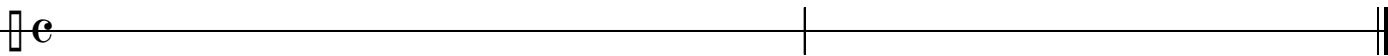


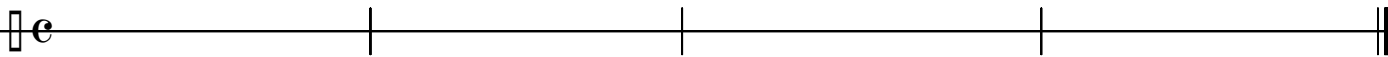
# Chapter 6 Rhythm Dictation Examples

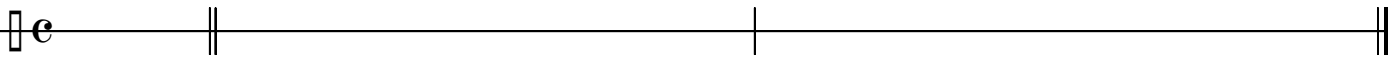
1) 

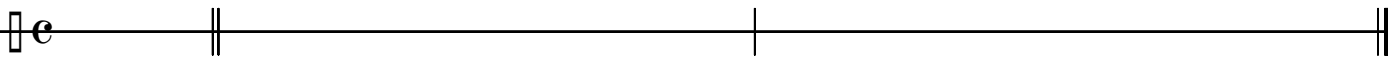
2) 

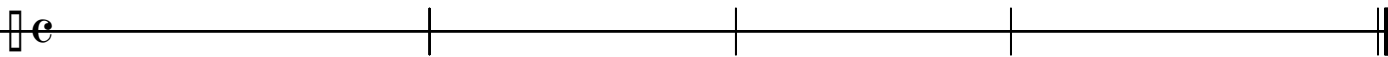
3) 

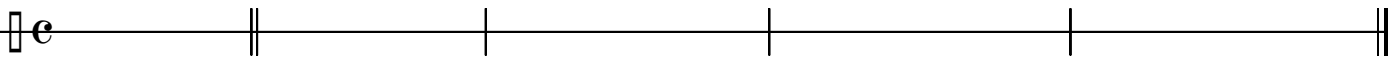
4) 

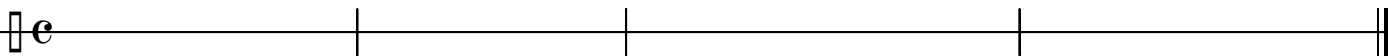
5) 

6) 

7) 

8) 

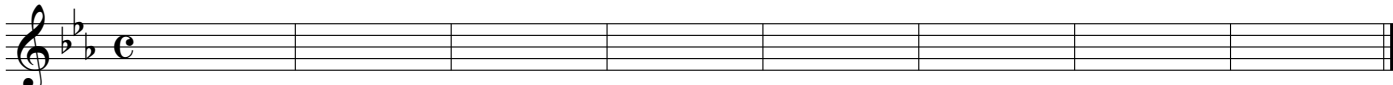
9) 

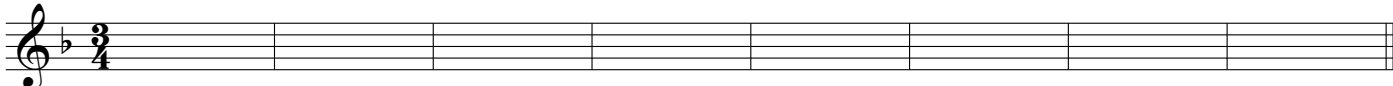
10) 

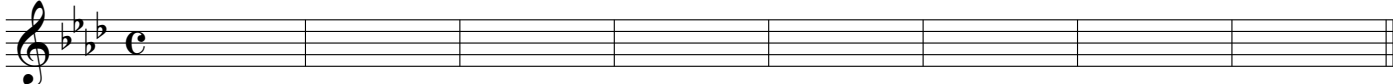
# Chapter 6 Harmonic Dictation Examples

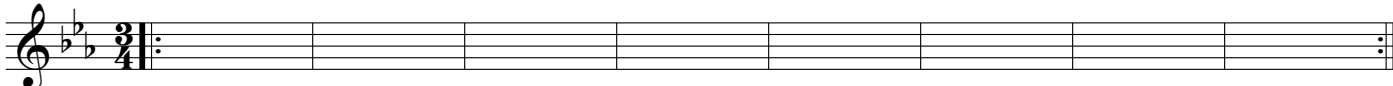
## Melodic and Harmonic Minor

∕

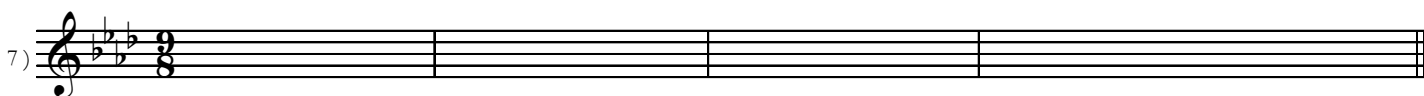
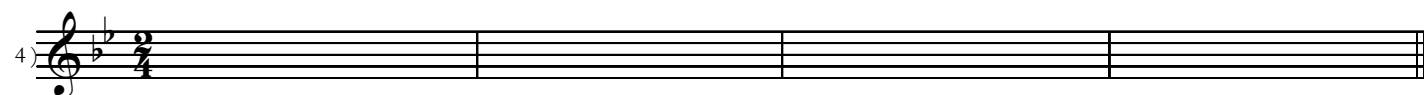
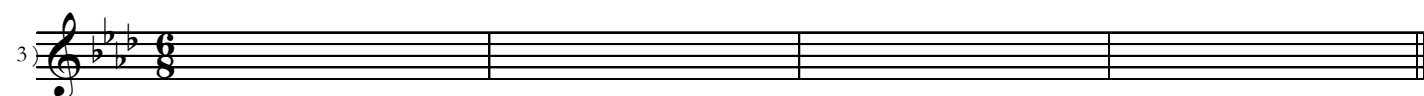
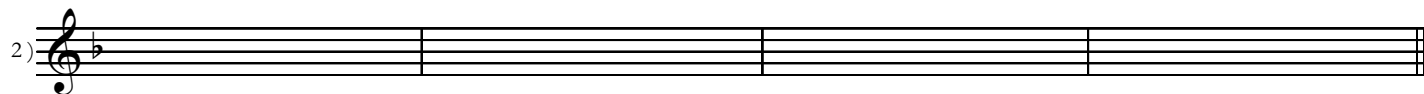
1) 

2) 

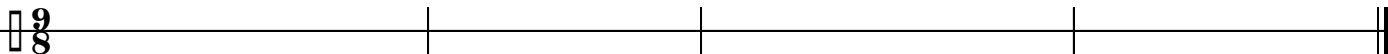
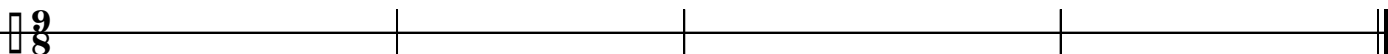
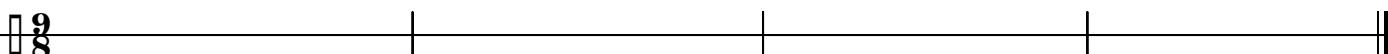
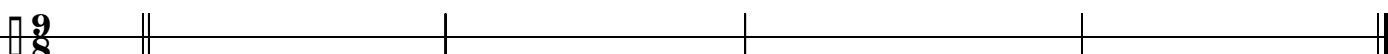
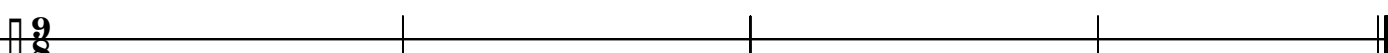
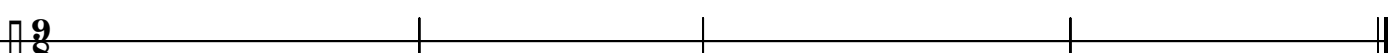

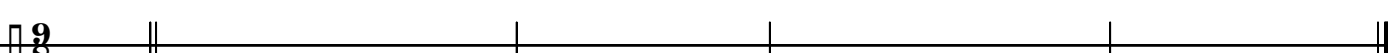
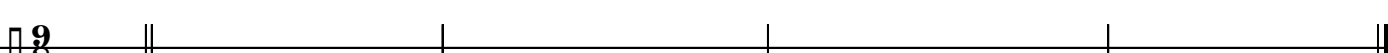
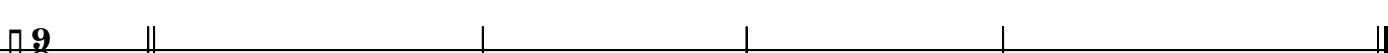
3) 

4) 

## Chapter 7 Melodic Dictation Examples

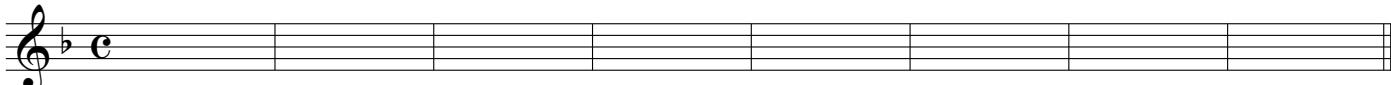



# Chapter 7 Rhythm Dictation Examples

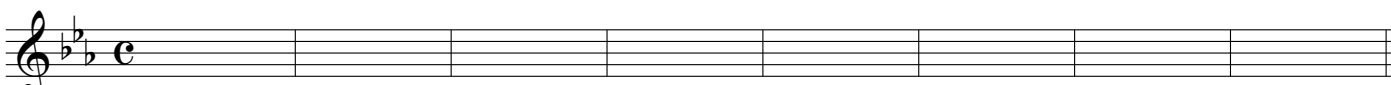
- 1)  Musical staff with treble clef and 3/8 time signature. Three vertical tick marks are placed on the staff at approximately 33%, 50%, and 67% of the measure, with a double bar line at the end.
- 2)  Musical staff with treble clef and 3/8 time signature. Three vertical tick marks are placed on the staff at approximately 33%, 50%, and 67% of the measure, with a double bar line at the end.
- 3)  Musical staff with treble clef and 3/8 time signature. Three vertical tick marks are placed on the staff at approximately 33%, 50%, and 67% of the measure, with a double bar line at the end.
- 4)  Musical staff with treble clef and 3/8 time signature. A double bar line is placed at the beginning of the measure. Three vertical tick marks are placed on the staff at approximately 33%, 50%, and 67% of the measure, with a double bar line at the end.
- 5)  Musical staff with treble clef and 3/8 time signature. Three vertical tick marks are placed on the staff at approximately 33%, 50%, and 67% of the measure, with a double bar line at the end.
- 6)  Musical staff with treble clef and 3/8 time signature. Three vertical tick marks are placed on the staff at approximately 33%, 50%, and 67% of the measure, with a double bar line at the end.
- 7)  Musical staff with treble clef and 3/8 time signature. A double bar line is placed at the beginning of the measure. Three vertical tick marks are placed on the staff at approximately 33%, 50%, and 67% of the measure, with a double bar line at the end.
- 8)  Musical staff with treble clef and 3/8 time signature. A double bar line is placed at the beginning of the measure. Three vertical tick marks are placed on the staff at approximately 33%, 50%, and 67% of the measure, with a double bar line at the end.
- 9)  Musical staff with treble clef and 3/8 time signature. A double bar line is placed at the beginning of the measure. Three vertical tick marks are placed on the staff at approximately 33%, 50%, and 67% of the measure, with a double bar line at the end.
- 10)  Musical staff with treble clef and 3/8 time signature. A double bar line is placed at the beginning of the measure. Three vertical tick marks are placed on the staff at approximately 33%, 50%, and 67% of the measure, with a double bar line at the end.

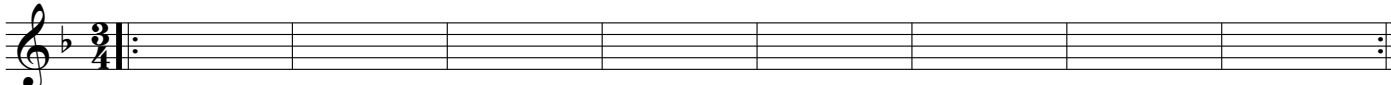
# Chapter 7 Harmonic Dictation Examples

## Modal Interchange

1) 

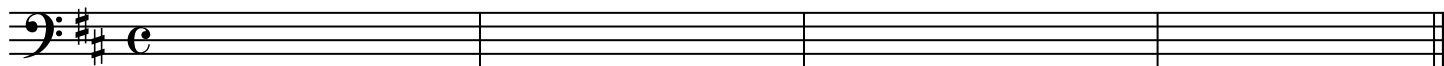
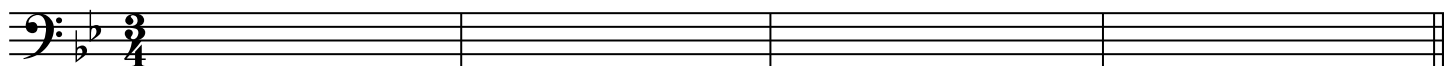
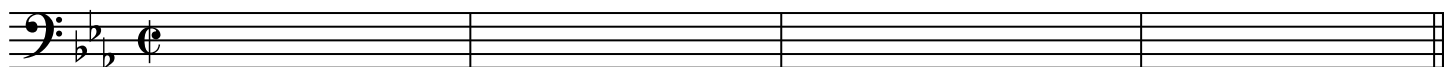
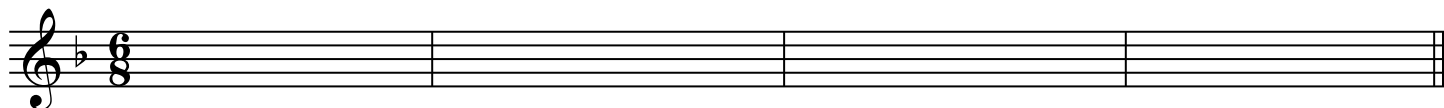
2) 

3) 

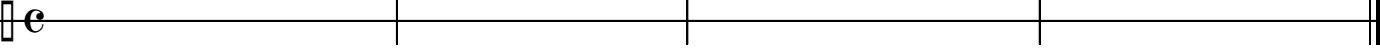
4) 

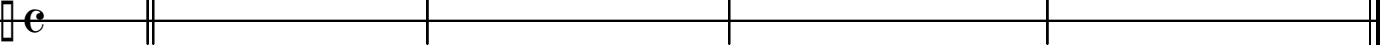
# ET3

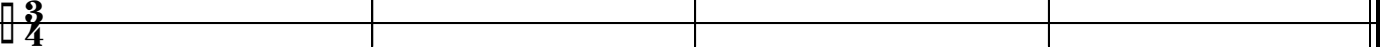
## Chapter 8 melodic dictation

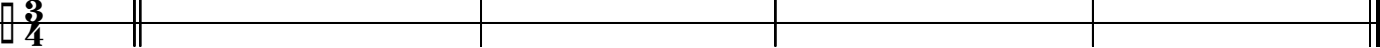


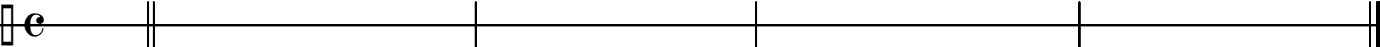
# Chapter 8 Rhythm Dictation Examples

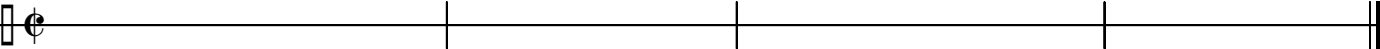
1)  Musical staff with common time signature (C) and three vertical tick marks.


2)  Musical staff with common time signature (C), a double bar line, and three vertical tick marks.

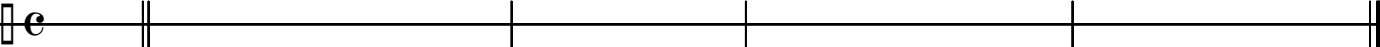
3)  Musical staff with 3/4 time signature and three vertical tick marks.

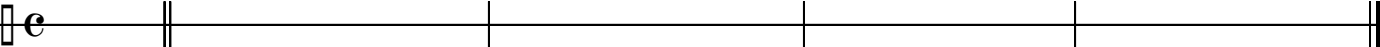
4)  Musical staff with 3/4 time signature, a double bar line, and three vertical tick marks.

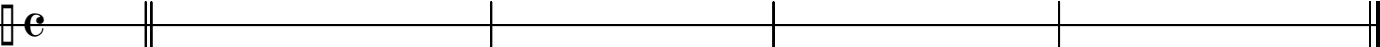
5)  Musical staff with common time signature (C), a double bar line, and three vertical tick marks.

6)  Musical staff with common time signature (C) and three vertical tick marks.

7)  Musical staff with common time signature (C) and three vertical tick marks.

8)  Musical staff with common time signature (C), a double bar line, and three vertical tick marks.

9)  Musical staff with common time signature (C), a double bar line, and three vertical tick marks.

10)  Musical staff with common time signature (C), a double bar line, and three vertical tick marks.

## Chapter 8 Harmonic Dictation Examples Review

